

# 2017 United Way ALICE Report

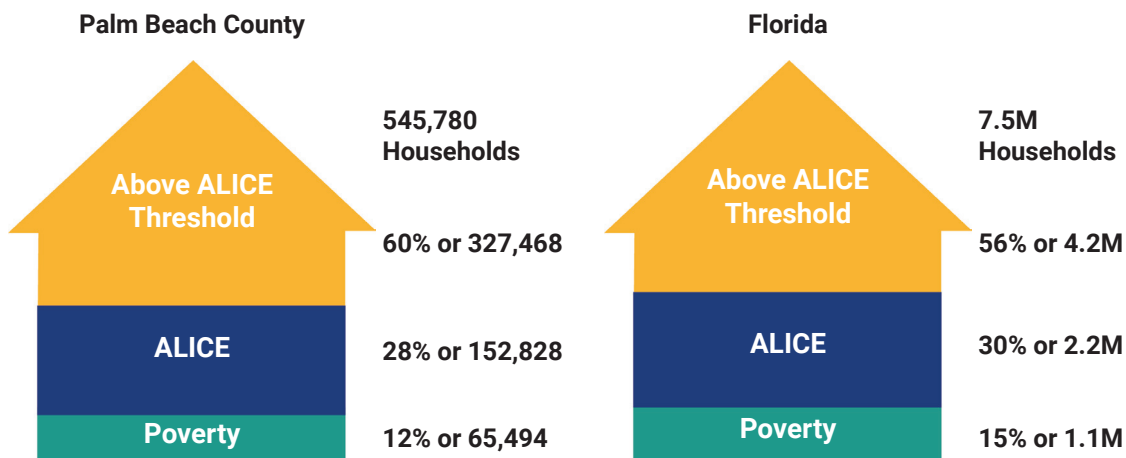
## A Study of Financial Hardship



United Way  
of Palm Beach County

The updated United Way ALICE® Report for Florida continues to shine a spotlight on a large population of residents who work hard, yet have little or no savings and are one emergency from falling into poverty. ALICE, an acronym that stands for **A**sset **L**imited, **I**ncome **C**onstrained, **E**mloyed, means a household with income above the Federal Poverty Level but below a basic cost-of-living threshold (the ALICE Threshold).

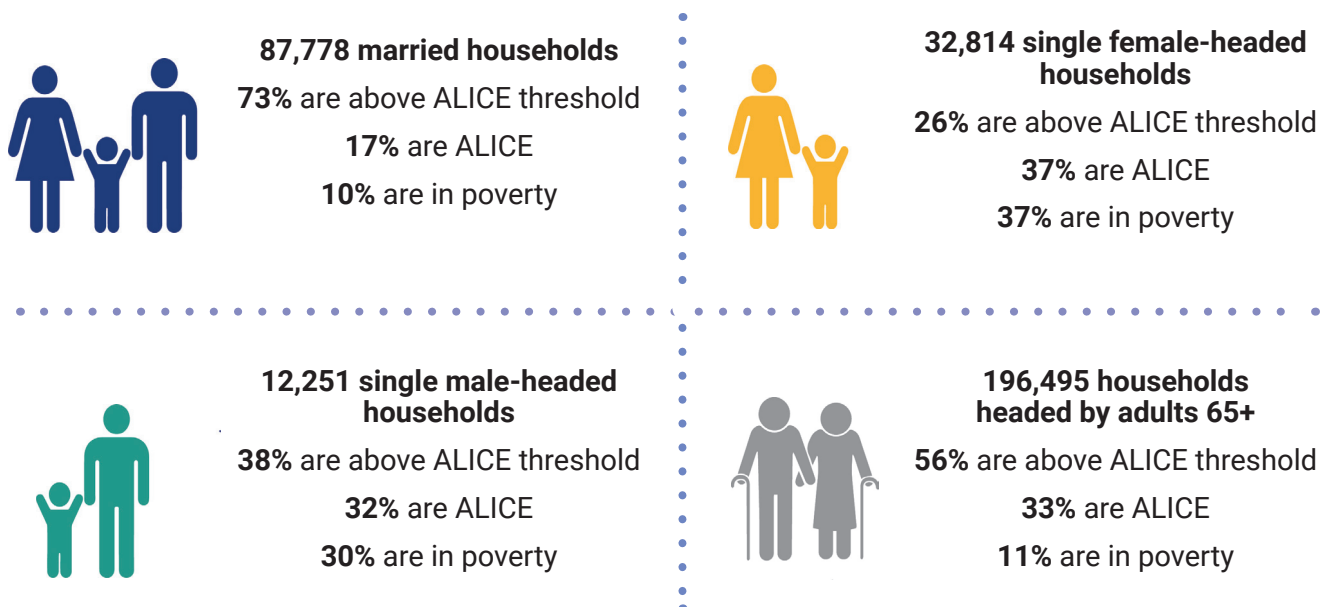
ALICE workers hold jobs as childcare providers, home health aides, truck drivers, security guards, office assistants, and more—positions that are critical to the success of our community.



According to the most recent data, 40% of Palm Beach County households, including ALICE and those in poverty, struggle to afford basic needs. Across Florida as a whole, an even greater proportion—45%—cannot make ends meet.

### HOUSEHOLD TYPES

The 2017 ALICE Report looks more closely at families with children in Palm Beach County—those that are married, single-mother, and single-father households. A family headed by one adult is far more likely to fall short financially than a family with two adults. Seniors are another economically vulnerable population highlighted in the Report.



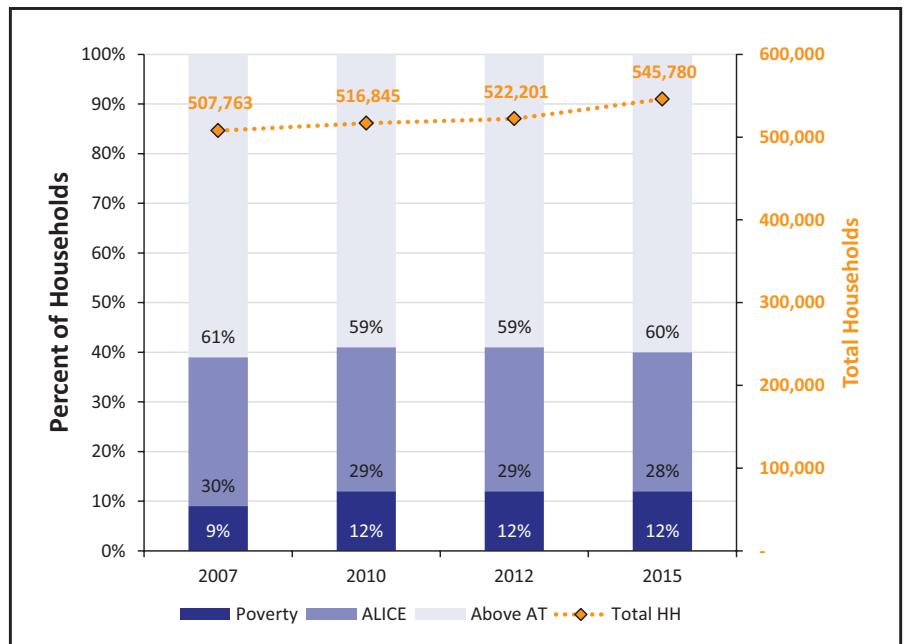
## Palm Beach County, 2015

Town	Total HH	% ALICE & Poverty
Atlantis	920	25%
Belle Glade	5,715	72%
Belle Glade-Pahokee CCD	9,504	73%
Boca Raton	40,551	32%
Boca Raton CCD	58,068	33%
Boynton Beach	29,848	45%
Boynton Beach-Delray Beach CCD	136,295	43%
Briny Breezes	497	46%
Cabana Colony CDP	849	42%
Delray Beach	27,741	42%
Greenacres	13,305	53%
Gulf Stream	310	18%
Gun Club Estates CDP	339	63%
Haverhill	630	46%
Highland Beach	2,026	24%
Hypoluxo	1,330	30%
Juno Beach	1,982	33%
Juno Ridge CDP	318	70%
Jupiter	24,536	32%
Jupiter CCD	36,810	32%
Jupiter Farms CDP	3,965	21%
Kenwood Estates CDP	383	58%
Lake Belvedere Estates CDP	936	28%
Lake Clarke Shores	1,528	34%
Lake Park	2,942	55%
Lake Worth	12,784	60%
Lake Worth CCD	74,418	57%
Lantana	3,884	52%
Limestone Creek CDP	296	51%
Loxahatchee Groves	1,006	30%
Mangonia Park	616	74%
North Palm Beach	6,092	35%
Ocean Ridge	842	32%
Pahokee	1,822	71%
Palm Beach	4,738	21%
Palm Beach Gardens	22,945	31%
Palm Beach Shores	650	38%
Palm Springs	7,684	68%
Pine Air CDP	637	65%
Plantation Mobile Home Park CDP	291	70%
Riviera Beach	11,570	53%
Riviera Beach CCD	42,352	44%
Royal Palm Beach	11,354	32%
Royal Palm Beach-West Jupiter CCD	37,692	31%
Royal Palm Estates CDP	799	61%
San Castle CDP	1,078	50%
Schall Circle CDP	388	85%
Seminole Manor CDP	912	63%
South Bay	595	68%
South Palm Beach	804	37%
Sunshine Parkway CCD	71,218	30%
Tequesta	2,534	41%
The Acreage CDP	11,205	27%
Watergate CDP	972	58%
Wellington	19,959	28%
West Palm Beach	41,168	48%
West Palm Beach CCD	58,959	57%
Western Community CCD	9,072	24%
Westgate CDP	2,187	76%

## HOUSEHOLD INCOME

Over the past eight years, the proportion of Palm Beach County residents below the ALICE Threshold remained steady.

### Households by Income, 2007 to 2015



## COST OF LIVING

The Palm Beach County ALICE Threshold is based on the Household Survival Budget below. For example, a family of four (two adults, one infant, and one preschooler) needs \$61,776 a year (more than double the Federal Poverty Level of \$24,250) to cover just basic needs. This high cost of living reflects a 19% increase between 2007 and 2015. The budget does not include savings, leaving families vulnerable to emergencies such as a major car repair or medical expense.

### Household Survival Budget, Palm Beach County

	SINGLE ADULT	2 ADULTS, 1 INFANT, 1 PRESCHOOLER
<b>Monthly Costs</b>		
Housing	\$752	\$1,206
Child Care	\$-	\$1,147
Food	\$165	\$547
Transportation	\$419	\$837
Health Care	\$133	\$506
Miscellaneous	\$171	\$468
Taxes	\$244	\$437
<b>Monthly Total</b>	<b>\$1,884</b>	<b>\$5,148</b>
<b>ANNUAL TOTAL</b>	<b>\$22,608</b>	<b>\$61,776</b>
<b>POVERTY ANNUAL TOTAL</b>	<b>\$11,770</b>	<b>\$24,250</b>

# What is United Way of Palm Beach County Doing to Help?



## STABILIZING FAMILIES

- Alleviating hunger by increasing the number of households that are food secure.
- Ending homelessness by increasing the number of individuals and families that achieve housing stability.
- Increasing the number of households that increase income, build savings, and gain and sustain assets.
- Convening more than 180 partner organizations and agencies to implement a comprehensive county-wide plan that reduces local hunger.
- Offering free tax preparation services to households below the ALICE threshold and helping them claim tax credits for which they qualify. Learn more at [TaxesFiledFree.org](https://www.taxesfiledfree.org).



## HELPING YOUTH SUCCEED

- Supporting the education and development of youth so they graduate from high school and succeed in life.
- Connecting youth with caring adult mentors and supporting mentoring programs to increase their quality and impact.
- Working collectively to support the healthy growth, development and education of children and youth.
- Enhancing the quality of life for children with special needs and their families.
- Leading a collaborative effort to help students get ready for post-secondary education and career.



## INCREASING ACCESS TO CARE

- Increasing the ability of low-income, uninsured residents to access health insurance.
- Increasing the availability, accessibility and use of health care services among both uninsured and underinsured residents.
- Through our partnership with FamilyWize, helping residents of all income levels save on their prescription medications.



## CONNECTING TO SERVICES

- Serving callers 24/7 through 211 Palm Beach/Treasure Coast's HelpLine, providing crisis intervention; suicide prevention; and referrals to financial supports, housing resources, employment assistance, and other community services.

## What Can You Do?

**GIVE** - We invest in programs and services that help ALICE households overcome obstacles. With your support, we can ensure all residents have access to the basics for a good life.

**ADVOCATE** - We join with other Florida United Ways to advocate for state and federal legislative issues of critical importance to the ALICE population. Examples include preserving state funding for free tax preparation services, and restoring funding for outreach/enrollment services that reduce the number of uninsured children in Florida.

**VOLUNTEER** - We engage more than 6,000 volunteers who lend over 187,000 hours of their time annually to reduce hunger, mentor youth, help households secure tax refunds, and more. We make volunteering easy and flexible to fit everyone's busy schedule.

To read the full ALICE Report and learn more, visit [UnitedWayPBC.org/ALICE](https://www.UnitedWayPBC.org/ALICE)